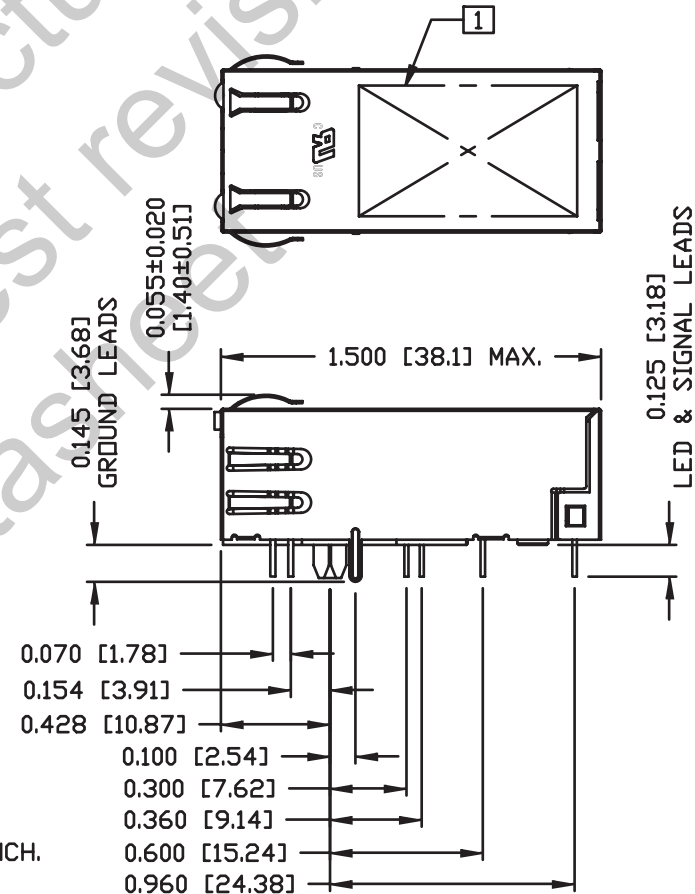
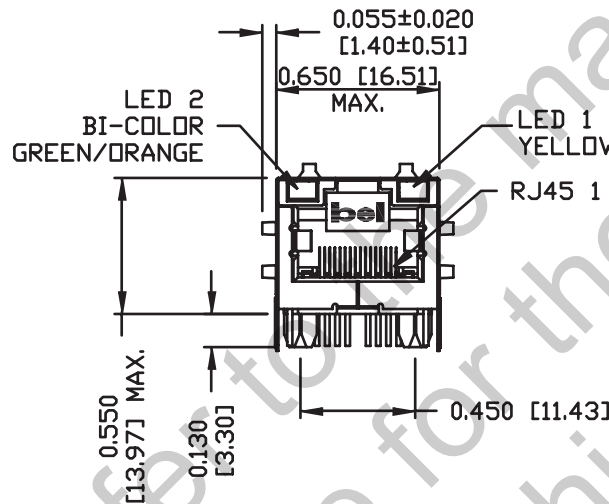


INTEGRATED CONNECTOR MODULES

0838-1X1T-W7 Gigabit Power over Ethernet Plus Single Port MagJack® with LEDs



MECHANICAL SPECIFICATION



NOTES:

PLASTIC HOUSING: THERMOPLASTIC PBT.

FLAMMABILITY RATING UL 94V-0.

CONTACTS: 50 MICRO-INCH HARD GOLD PLATING.

OUTPUT PINS: TIN-COATED COPPER WIRE, DIA 0.018 INCH AND 0.016 INCH.

METAL SHIELD: NICKEL PLATED ON COPPER ALLOY.

(ALL GROUND LEADS ARE SOLDER DIPPED)

1. MARK PART WITH MFG LOGO, MFG NAME, PART NUMBER, AND DATE CODE.

UL US UL RECOGNIZED - FILE #E196366 AND E169987.

RoHS COMPLIANT, PER EU DIRECTIVE 2002/95/EC

JACK CAVITY CONFORMS TO FCC RULES AND REGULATIONS.

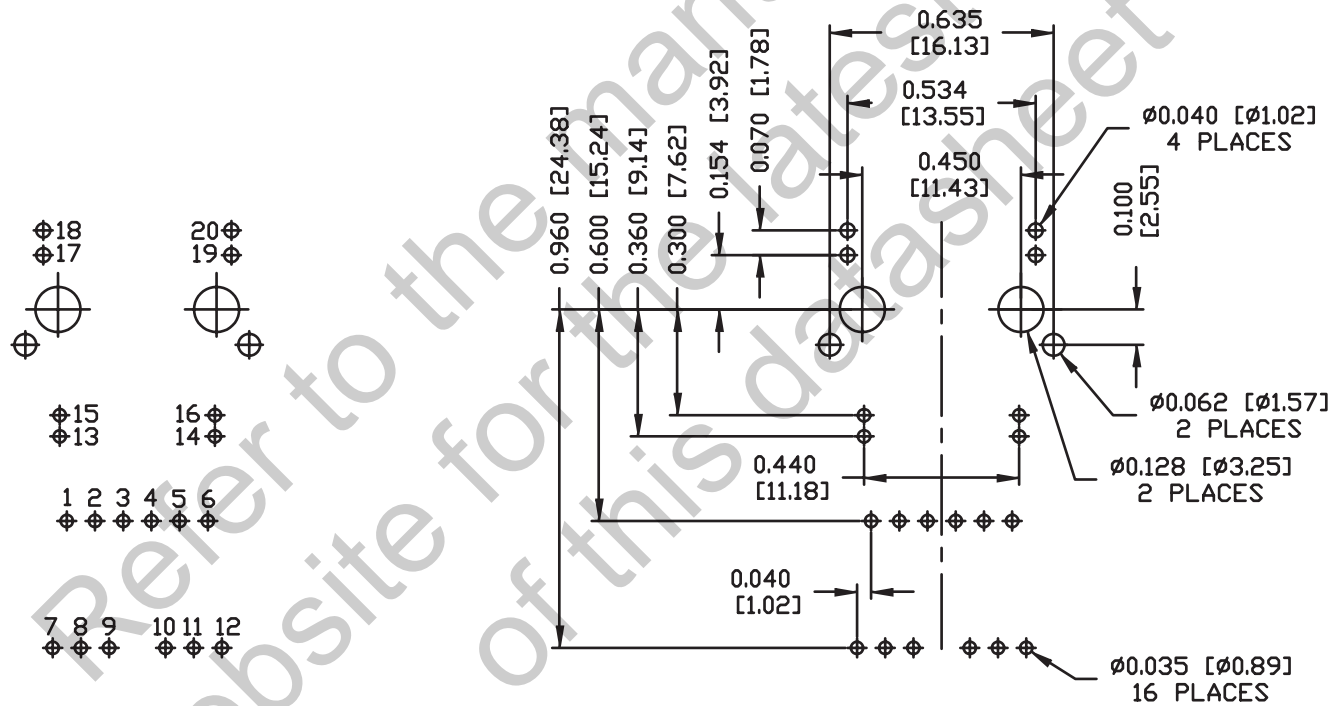
INTEGRATED CONNECTOR MODULES

0838-1X1T-W7 Gigabit Power over Ethernet Plus Single Port MagJack® with LEDs



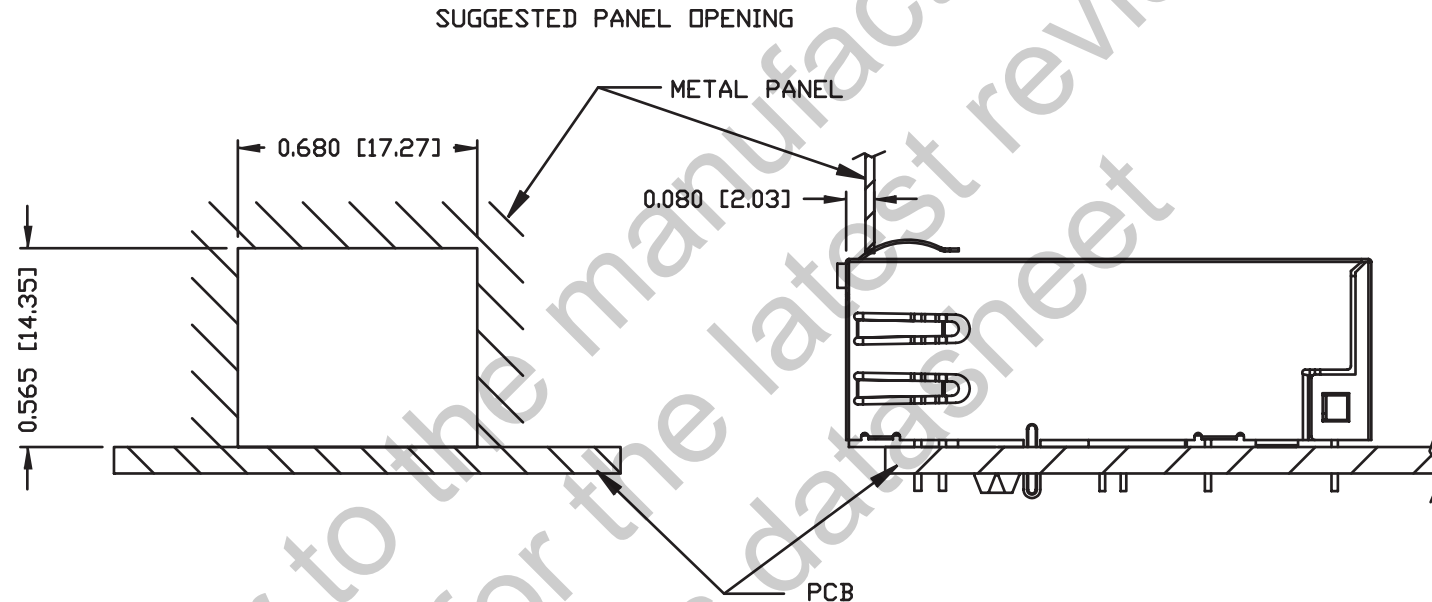
RECOMMENDED PCB FOOTPRINT

COMPONENT SIDE VIEW



INTEGRATED CONNECTOR MODULES

0838-1X1T-W7 Gigabit Power over Ethernet Plus Single Port MagJack® with LEDs



NOTE:

THE DISTANCE OF PANEL INSIDE SURFACE RELATIVE TO FRONT SURFACE OF PART IS ONLY A SUGGESTION. IN CASE THIS DISTANCE IS DIFFERENT, THE REQUIRED PANEL OPENING DIMENSIONS CHANGE ACCORDINGLY.

PACKING INFORMATION

PACKING TRAY : 0200-9999-R3 (TOP)
0200-9999-R4 (BOTTOM)

PACKING QUANTITY : 42 PCS FINISHED GOODS PER TRAY
10 TRAYS (420 PCS FINISHED GOODS) PER CARTON BOX

NOTE : CARDBOARDS ARE PLACED BETWEEN LAYERS OF PACKING TRAY INSIDE CARTON BOX
(INCLUDE THE UPPERMOST AND LOWERMOST TRAY)